

Module 2 – L05

Comparison Between Epithelial and Connective Tissues

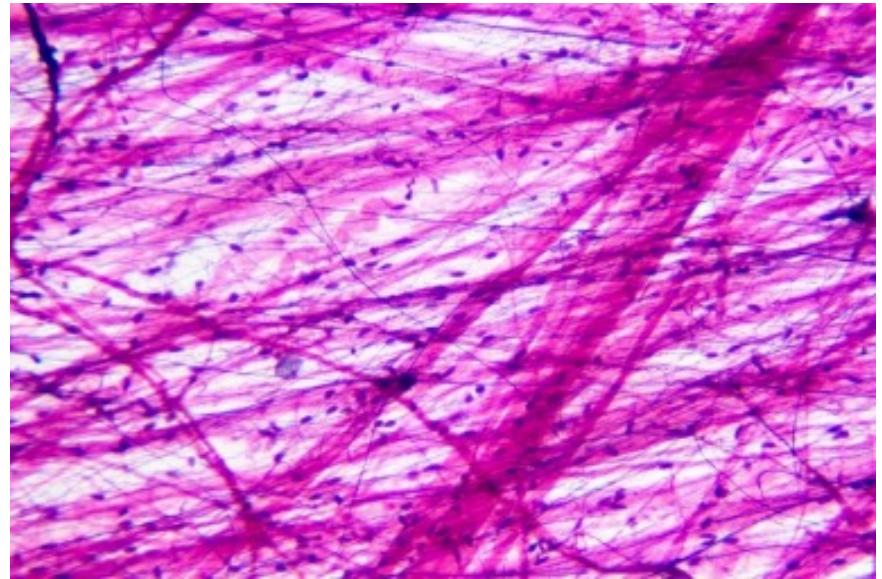
Dr. Lisa Brinn

lbrinn@fiu.edu

5. Comparison Between Epithelial and Connective Tissues



Epithelial tissue with many cells tightly packed together and little to no extracellular matrix



Connective tissue with a few scattered cells surrounded by large amounts of extracellular matrix